

## HEAD LICE MYTHS AND FACTS

Was your child sent home from school with head lice? Don't bug out! You're not alone! Between 6 and 12 million US children get head lice each year.<sup>2</sup>

### 5 MYTHS About Head Lice

**Only dirty children get head lice. FALSE.**

Head lice infest children from all backgrounds and walks of life. Anyone can get head lice, no matter how clean their home or hair is or where they live, go to school, or play. All it takes is head-to-head contact with someone who has head lice.<sup>2</sup>

**Head lice are dangerous. FALSE.**

Head lice do not carry any diseases. They can cause itching in people who are allergic to head louse bites, which can lead to excessive scratching. This scratching may increase the chances of a secondary skin infection.<sup>2</sup>

**Children who have head lice are always itching. FALSE.**

Only some people are allergic to louse saliva, which causes the scalp to itch in some people.<sup>2</sup> Minor itching can also be a side effect of some head lice treatments.<sup>3</sup>

**Head lice can live in a mattress or pillowcase for weeks at a time. FALSE.**

Because they need to feed on blood to survive, head lice will only live 1 or 2 days away from the human host.<sup>2</sup>

**There's no reason to involve your doctor if you think your child has head lice. FALSE.**

If you think your child has head lice, consider talking with your doctor to confirm the diagnosis and get advice on appropriate treatments. Natural remedies such as homeopathic shampoos that contain sodium chloride 10% may cause stinging when applied, and their effectiveness has not been proven.<sup>4</sup>

### 5 FACTS About Head Lice

**Head lice can't jump, hop, or fly. TRUE.**

Head lice crawl quickly from person to person through head-to-head contact.<sup>2</sup> However, head lice can be projected from the scalp as a result of static buildup from brushing dry hair.<sup>5</sup>

**Head lice don't spread easily to pillows, furniture, stuffed animals, or clothes, but can remain on them for 1-2 days. TRUE.**

**If you're worried:**

- Machine-wash the items in hot water.<sup>6</sup>
- Seal items that can't be washed in plastic bags for 2 weeks. (This applies only to items that were in contact with your child's head over the last 24 to 48 hours.<sup>2,6</sup>)

**Head lice usually spread through close contact with a person's head or, less commonly, through sharing things like hats, helmets, scarves, or pillows.<sup>6</sup> TRUE.**

Close contact with an infested person's head can occur in unexpected ways, so be alert.

**You don't need to shave your child's head. TRUE.**

While effective, it's not always the most practical option.<sup>7</sup>

**Home remedies were used to treat head lice in the past.<sup>7</sup> TRUE.**

There's not clear scientific evidence that says home remedies work as effectively as prescription head lice treatments.<sup>3</sup> Nowadays, people can make an appointment to discuss treatment options with a physician.



## Don't Bug Out. Sklice Lotion Kills Lice.

**About Sklice\* (ivermectin, 0.5%) Lotion**

Sklice Lotion is a 10-minute treatment for head lice—with no nit combing required.\* Sklice Lotion has been studied in children 6 months of age and older.<sup>8</sup>

\*A fine-tooth comb or special nit comb may be used to remove dead lice and nits.

### IMPORTANT SAFETY INFORMATION FOR SKLICE LOTION

The most common side effects from Sklice Lotion include eye redness or soreness, eye irritation, dandruff, dry skin, and burning sensation of the skin.

### INDICATION:

Sklice Lotion is a prescription medication for topical use on the hair and scalp only, for treatment of head lice in people 6 months of age and older.

### ADJUNCTIVE MEASURES:

Sklice Lotion should be used in the context of an overall lice management program.

**Please see the full Prescribing Information for Sklice Lotion.**

# 5 STEPS FOR MANAGING HEAD LICE IN YOUR HOUSE

Like any parent dealing with head lice for the first time, you may have a few questions. This checklist will help you get started.

## Step 1: Check your whole family for head lice.

- ☐ Check your family members for lice and nits
- ☐ Consider calling your doctor right away to set up an appointment and get treatment advice if needed
- ☐ If you suspect any family members have lice, it's a good idea to take them to the doctor as well

## Step 2: See your doctor.

- ☐ Ask about treatment options
- ☐ Pick up the prescription from the pharmacy
- ☐ Make sure you understand exactly how to use the medication before leaving the pharmacy

## Step 3: Remove lice from your house.

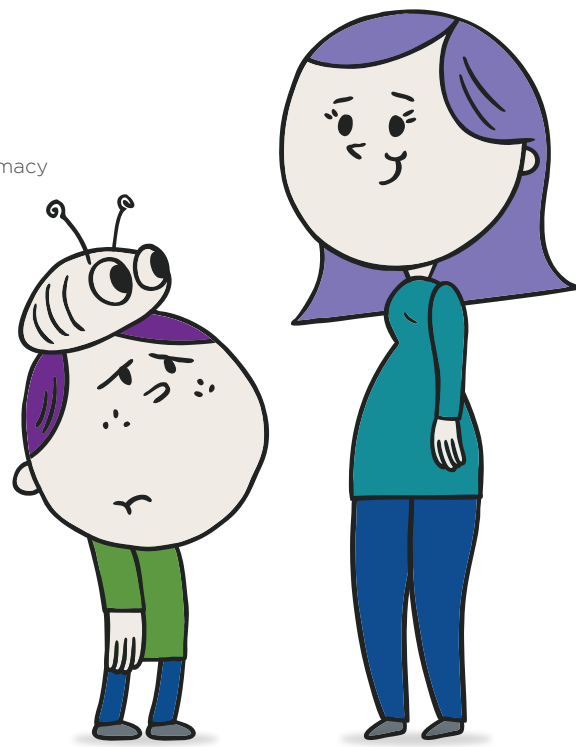
- ☐ Identify items that might contain head lice (ie, linens, hats, stuffed animals)<sup>2,6</sup>
- ☐ Machine-wash all washable items in hot water (130° F)<sup>6</sup>
- ☐ Seal items that can't be washed in plastic bags for 2 weeks<sup>6</sup>

## Step 4: Share the info.

- ☐ Call parents of children who may have been in close contact with yours<sup>2</sup>
- ☐ Cancel all sleepovers and play dates until you're sure your child is lice free<sup>6</sup>
- ☐ Notify your child's school<sup>2</sup>

## Step 5: Don't bug out.

- ☐ Take a deep breath
- ☐ Reassure your child that it's OK
- ☐ Help your child understand that it's not their fault. Anyone can get lice, no matter how clean their hair or house is or where they live, go to school, or play



### IMPORTANT SAFETY INFORMATION FOR SKLICE LOTION

#### INDICATION:

Sklice Lotion is a prescription medication for topical use on the hair and scalp only, for treatment of head lice in people 6 months of age and older.

#### ADJUNCTIVE MEASURES:

Sklice Lotion should be used in the context of an overall lice management program:

- Wash (in hot water) or dry-clean all recently worn clothing, hats, used bedding, and towels.
- Wash personal care items such as combs, brushes, and hair clips in hot water.

A fine-tooth comb or special nit comb may be used to remove dead lice and nits.

#### BEFORE USING SKLICE LOTION, TELL YOUR DOCTOR IF YOU OR YOUR CHILD:

- have any skin conditions or sensitivities

- have any other medical conditions
- are pregnant or plan to become pregnant. It is not known if Sklice Lotion can harm your unborn baby.
- are breastfeeding or plan to breastfeed. It is not known if Sklice Lotion passes into your breast milk.

#### IMPORTANT SAFETY INFORMATION FOR SKLICE LOTION:

To prevent accidental ingestion, adult supervision is required for pediatric application. Avoid contact with eyes.

The most common side effects from Sklice Lotion include eye redness or soreness, eye irritation, dandruff, dry skin, and burning sensation of the skin.

Talk with your doctor if you or your child have any side effect that bothers you or that does not go away. You may report side effects to the FDA at 1-800-FDA-1088.

**Please see the full Prescribing Information for Sklice Lotion.**

**References:** 1. Data on file. Arbor Pharmaceuticals, LLC. 2. Centers for Disease Control and Prevention. Frequently asked questions (FAQs). [http://www.cdc.gov/parasites/lice/head/ge\\_info/faqs.html](http://www.cdc.gov/parasites/lice/head/ge_info/faqs.html). Accessed August 31, 2016. 3. Centers for Disease Control and Prevention. Treatment frequently asked questions (FAQs). <http://www.cdc.gov/parasites/lice/head/treatment.html>. Accessed August 31, 2016. 4. West DP. Head lice treatment costs and the impact on managed care. *Am J Manag Care*. 2004;10:S277-S282. 5. Patient. Checking for head lice. <http://patient.info/health/checking-for-head-lice>. Accessed August 31, 2016. 6. Centers for Disease Control and Prevention. Prevention & control. <http://www.cdc.gov/parasites/lice/head/prevent.html>. Accessed August 31, 2016. 7. Mazurek CM, Lee NP. How to manage head lice. *West J Med*. 2000;172(5):342-345. 8. Sklice Lotion [package insert].